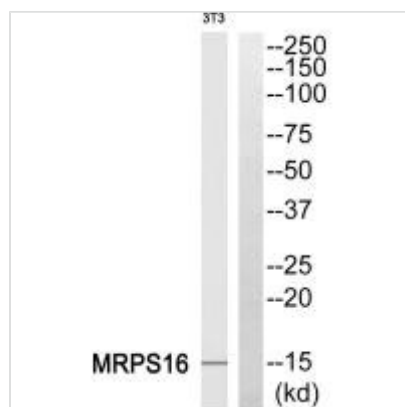




MRPS16 Antibody

Product Code	CSB-PA869890
Storage	Upon receipt, store at -20°C or -80°C. Avoid repeated freeze.
Uniprot No.	Q9Y3D3
Immunogen	Synthesized peptide derived from internal of Human MRPS16.
Raised In	Rabbit
Species Reactivity	Human,Mouse
Specificity	The antibody detects endogenous levels of total MRPS16 protein.
Tested Applications	ELISA,WB,IHC;WB:1:500-1:3000,IHC:1:50-1:100
Form	Rabbit IgG in phosphate buffered saline (without Mg ²⁺ and Ca ²⁺), pH 7.4, 150mM NaCl, 0.02% sodium azide and 50% glycerol.
Purification Method	The antibody was affinity-purified from rabbit antiserum by affinity-chromatography using epitope-specific immunogen.
Clonality	Polyclonal
Alias	mitochondrial ribosomal protein S16; MRP-S16; RPMS16; RT16; S16mt
Product Type	Polyclonal Antibody
Immunogen Species	Homo sapiens (Human)
Target Names	MRPS16

Image



Western blot analysis of extracts from HepG2 cells, using MRPS16 antibody.



Immunohistochemistry analysis of paraffin-embedded human tonsil tissue using MRPS16 antibody.