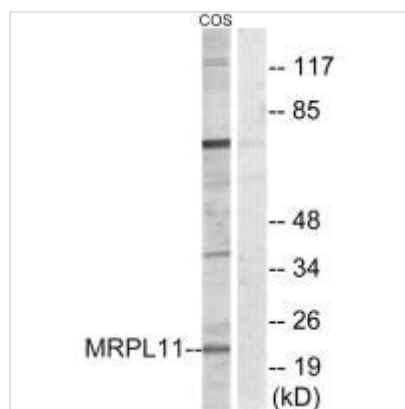




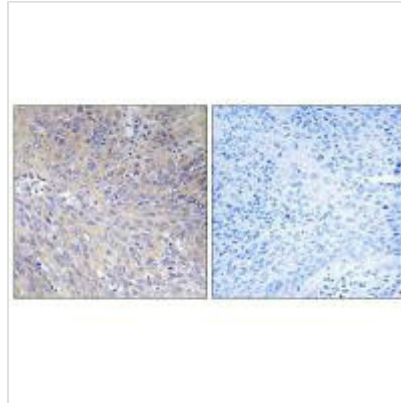
MRPL11 Antibody

Product Code	CSB-PA270944
Storage	Upon receipt, store at -20°C or -80°C. Avoid repeated freeze.
Uniprot No.	Q9Y3B7
Immunogen	Synthesized peptide derived from internal of Human MRPL11.
Raised In	Rabbit
Species Reactivity	Human
Specificity	The antibody detects endogenous levels of total MRPL11 protein.
Tested Applications	ELISA,WB,IHC,IF;WB:1:500-1:3000,IHC:1:50-1:100,IF:1:100-1:500
Form	Rabbit IgG in phosphate buffered saline (without Mg ²⁺ and Ca ²⁺), pH 7.4, 150mM NaCl, 0.02% sodium azide and 50% glycerol.
Purification Method	The antibody was affinity-purified from rabbit antiserum by affinity-chromatography using epitope-specific immunogen.
Clonality	Polyclonal
Alias	cgi-113; cgi-113 protein; l11mt; mgc111024; mitochondrial ribosomal protein l11
Product Type	Polyclonal Antibody
Immunogen Species	Homo sapiens (Human)
Target Names	MRPL11

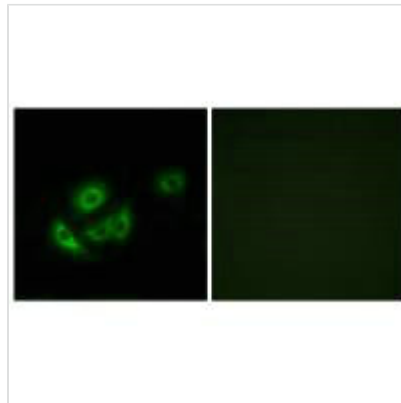
Image



Western blot analysis of extracts from COS cells, using MRPL11 antibody.



Immunohistochemistry analysis of paraffin-embedded human cervix carcinoma tissue using MRPL11 antibody.



Immunofluorescence analysis of A549 cells, using MRPL11 antibody.

Usage

For Research Use Only. Not for use in diagnostic or therapeutic procedures.