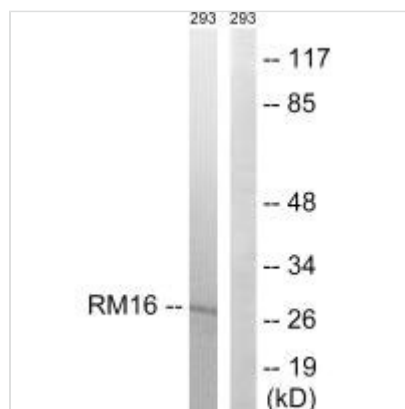




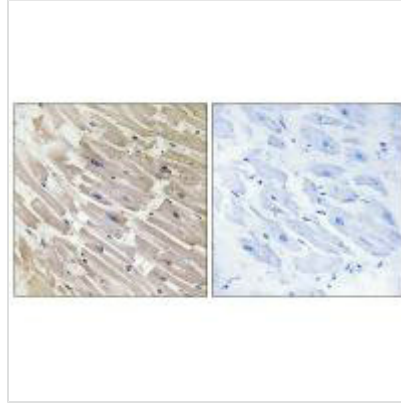
MRPL16 Antibody

Product Code	CSB-PA068427
Storage	Upon receipt, store at -20°C or -80°C. Avoid repeated freeze.
Uniprot No.	Q9NX20
Immunogen	Synthesized peptide derived from internal of Human MRPL16.
Raised In	Rabbit
Species Reactivity	Human
Specificity	The antibody detects endogenous levels of total MRPL16 protein.
Tested Applications	ELISA, WB, IHC; WB: 1:500-1:3000, IHC: 1:50-1:100
Form	Rabbit IgG in phosphate buffered saline (without Mg ²⁺ and Ca ²⁺), pH 7.4, 150mM NaCl, 0.02% sodium azide and 50% glycerol.
Purification Method	The antibody was affinity-purified from rabbit antiserum by affinity-chromatography using epitope-specific immunogen.
Clonality	Polyclonal
Alias	39S ribosomal protein L16; mitochondrial; L16mt; mitochondrial ribosomal protein L16; MRP-L16
Product Type	Polyclonal Antibody
Immunogen Species	Homo sapiens (Human)
Target Names	MRPL16

Image



Western blot analysis of extracts from 293 cells, using MRPL16 antibody.



Immunohistochemistry analysis of paraffin-embedded human heart tissue using MRPL16 antibody.

Usage

For Research Use Only. Not for use in diagnostic or therapeutic procedures.