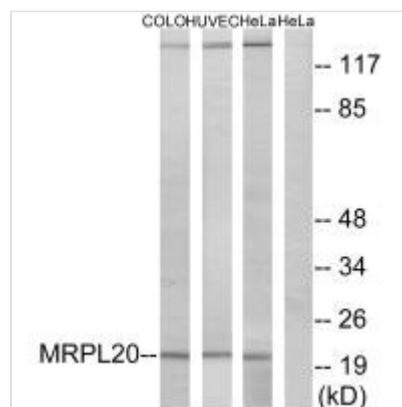




MRPL20 Antibody

Product Code	CSB-PA573615
Storage	Upon receipt, store at -20°C or -80°C. Avoid repeated freeze.
Uniprot No.	Q9BYC9
Immunogen	Synthesized peptide derived from C-terminal of Human MRPL20.
Raised In	Rabbit
Species Reactivity	Human,Mouse,Rat
Specificity	The antibody detects endogenous levels of total MRPL20 protein.
Tested Applications	ELISA,WB;WB:1:500-1:3000
Form	Rabbit IgG in phosphate buffered saline (without Mg ²⁺ and Ca ²⁺), pH 7.4, 150mM NaCl, 0.02% sodium azide and 50% glycerol.
Purification Method	The antibody was affinity-purified from rabbit antiserum by affinity-chromatography using epitope-specific immunogen.
Clonality	Polyclonal
Alias	39S ribosomal protein L20; mitochondrial [Precursor]; L20mt; MRP-L20; MRPL20
Product Type	Polyclonal Antibody
Immunogen Species	Homo sapiens (Human)
Target Names	MRPL20

Image



Western blot analysis of extracts from COLO cells, HUVEC cells and HeLa cells, using MRPL20 antibody.

Usage For Research Use Only. Not for use in diagnostic or therapeutic procedures.