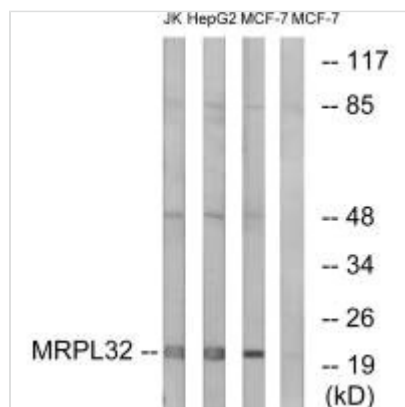




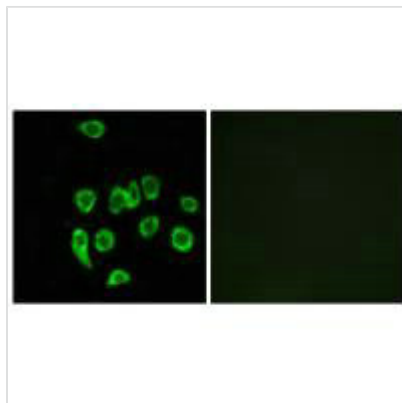
MRPL32 Antibody

Product Code	CSB-PA588561
Storage	Upon receipt, store at -20°C or -80°C. Avoid repeated freeze.
Uniprot No.	Q9BYC8
Immunogen	Synthesized peptide derived from internal of Human MRPL32.
Raised In	Rabbit
Species Reactivity	Human
Specificity	The antibody detects endogenous levels of total MRPL32 protein.
Tested Applications	ELISA,WB,IF;WB:1:500-1:3000,IF:1:100-1:500
Form	Rabbit IgG in phosphate buffered saline (without Mg ²⁺ and Ca ²⁺), pH 7.4, 150mM NaCl, 0.02% sodium azide and 50% glycerol.
Purification Method	The antibody was affinity-purified from rabbit antiserum by affinity-chromatography using epitope-specific immunogen.
Clonality	Polyclonal
Alias	39S ribosomal protein L32; mitochondrial [Precursor]; L32mt; MRP-L32; HSPC283
Product Type	Polyclonal Antibody
Immunogen Species	Homo sapiens (Human)
Target Names	MRPL32

Image



Western blot analysis of extracts from Jurkat cells, MCF-7 cells and HepG2 cells, using MRPL32 antibody.



Immunofluorescence analysis of A549 cells,
using MRPL32 antibody.