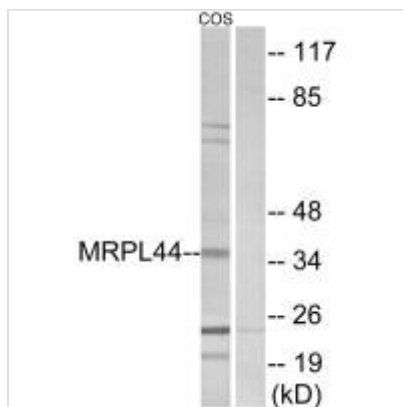




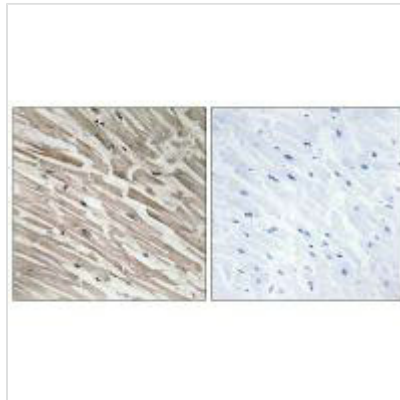
# MRPL44 Antibody

<b>Product Code</b>	CSB-PA436833
<b>Storage</b>	Upon receipt, store at -20°C or -80°C. Avoid repeated freeze.
<b>Uniprot No.</b>	Q9H9J2
<b>Immunogen</b>	Synthesized peptide derived from internal of Human MRPL44.
<b>Raised In</b>	Rabbit
<b>Species Reactivity</b>	Human,Mouse,Rat
<b>Specificity</b>	The antibody detects endogenous levels of total MRPL44 protein.
<b>Tested Applications</b>	ELISA,WB,IHC,IF;WB:1:500-1:3000,IHC:1:50-1:100,IF:1:100-1:500
<b>Form</b>	Rabbit IgG in phosphate buffered saline (without Mg <sup>2+</sup> and Ca <sup>2+</sup> ), pH 7.4, 150mM NaCl, 0.02% sodium azide and 50% glycerol.
<b>Purification Method</b>	The antibody was affinity-purified from rabbit antiserum by affinity-chromatography using epitope-specific immunogen.
<b>Clonality</b>	Polyclonal
<b>Alias</b>	39S ribosomal protein L44; mitochondrial; EC 3.1.26.-; RM44;
<b>Product Type</b>	Polyclonal Antibody
<b>Immunogen Species</b>	Homo sapiens (Human)
<b>Target Names</b>	MRPL44

## Image



Western blot analysis of extracts from COS-7 cells, using MRPL44 antibody.



Immunohistochemistry analysis of paraffin-embedded human heart tissue using MRPL44 antibody.



Immunofluorescence analysis of HuvEc cells, using MRPL44 antibody.