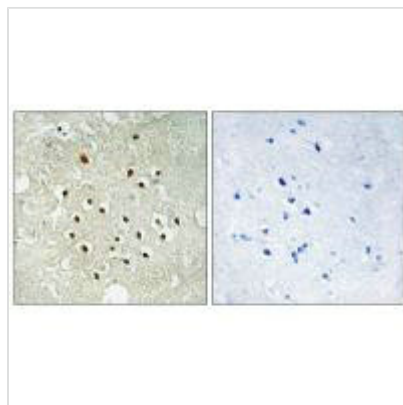




RPS19BP1 Antibody

Product Code	CSB-PA160838
Storage	Upon receipt, store at -20°C or -80°C. Avoid repeated freeze.
Uniprot No.	Q86WX3
Immunogen	Synthesized peptide derived from internal of Human RPS19BP1.
Raised In	Rabbit
Species Reactivity	Human, Mouse
Specificity	The antibody detects endogenous levels of total RPS19BP1 protein.
Tested Applications	ELISA, IHC; IHC: 1:50-1:100
Form	Rabbit IgG in phosphate buffered saline (without Mg ²⁺ and Ca ²⁺), pH 7.4, 150mM NaCl, 0.02% sodium azide and 50% glycerol.
Purification Method	The antibody was affinity-purified from rabbit antiserum by affinity-chromatography using epitope-specific immunogen.
Clonality	Polyclonal
Alias	40S ribosomal protein S19-binding protein 1; RPS19-binding protein 1; S19BP;
Product Type	Polyclonal Antibody
Immunogen Species	Homo sapiens (Human)
Target Names	RPS19BP1

Image



Immunohistochemistry analysis of paraffin-embedded human brain tissue using RPS19BP1 antibody.

Usage

For Research Use Only. Not for use in diagnostic or therapeutic procedures.