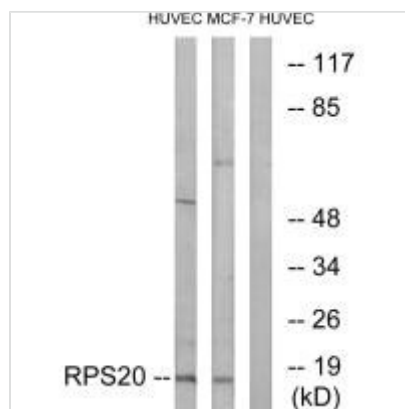




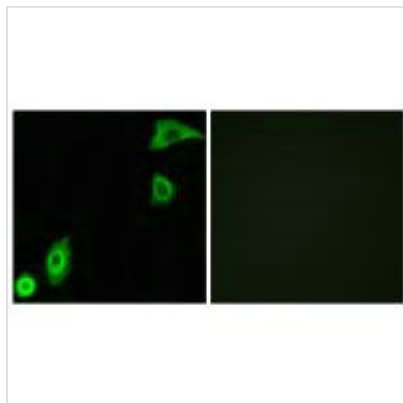
RPS20 Antibody

Product Code	CSB-PA176463
Storage	Upon receipt, store at -20°C or -80°C. Avoid repeated freeze.
Uniprot No.	P60866
Immunogen	Synthesized peptide derived from internal of Human RPS20.
Raised In	Rabbit
Species Reactivity	Human,Mouse,Rat
Specificity	The antibody detects endogenous levels of total RPS20 protein.
Tested Applications	ELISA,WB,IF;WB:1:500-1:3000,IF:1:100-1:500
Form	Rabbit IgG in phosphate buffered saline (without Mg ²⁺ and Ca ²⁺), pH 7.4, 150mM NaCl, 0.02% sodium azide and 50% glycerol.
Purification Method	The antibody was affinity-purified from rabbit antiserum by affinity-chromatography using epitope-specific immunogen.
Clonality	Polyclonal
Alias	40S ribosomal protein S20; RS20;
Product Type	Polyclonal Antibody
Immunogen Species	Homo sapiens (Human)
Target Names	RPS20

Image



Western blot analysis of extracts from HUVEC cells and MCF-7 cells, using RPS20 antibody.



Immunofluorescence analysis of A549 cells, using RPS20 antibody.

Usage

For Research Use Only. Not for use in diagnostic or therapeutic procedures.