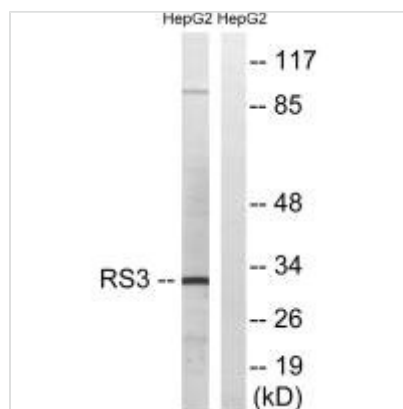




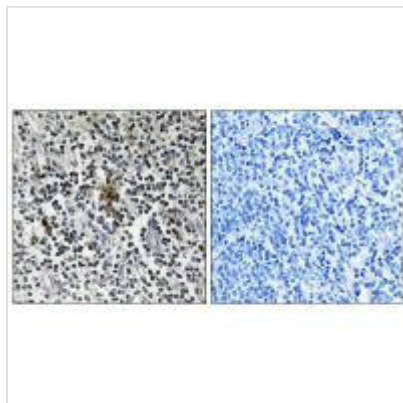
RPS3 Antibody

Product Code	CSB-PA136884
Storage	Upon receipt, store at -20°C or -80°C. Avoid repeated freeze.
Uniprot No.	P23396
Immunogen	Synthesized peptide derived from internal of Human RPS3.
Raised In	Rabbit
Species Reactivity	Human,Mouse
Specificity	The antibody detects endogenous levels of total RPS3 protein.
Tested Applications	ELISA,WB,IHC;WB:1:500-1:3000,IHC:1:50-1:100
Form	Rabbit IgG in phosphate buffered saline (without Mg ²⁺ and Ca ²⁺), pH 7.4, 150mM NaCl, 0.02% sodium azide and 50% glycerol.
Purification Method	The antibody was affinity-purified from rabbit antiserum by affinity-chromatography using epitope-specific immunogen.
Clonality	Polyclonal
Alias	40S ribosomal protein S3; RS3;
Product Type	Polyclonal Antibody
Immunogen Species	Homo sapiens (Human)
Target Names	RPS3

Image



Western blot analysis of extracts from HepG2 cells, using RPS3 antibody.



Immunohistochemistry analysis of paraffin-embedded human tonsil tissue using RPS3 antibody.

Usage

For Research Use Only. Not for use in diagnostic or therapeutic procedures.