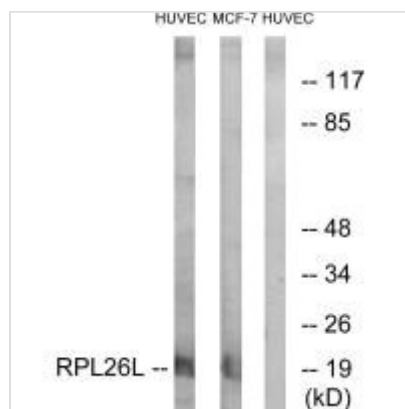




RPL26L1 Antibody

Product Code	CSB-PA077881
Storage	Upon receipt, store at -20°C or -80°C. Avoid repeated freeze.
Uniprot No.	Q9UNX3
Immunogen	Synthesized peptide derived from C-terminal of Human RPL26L.
Raised In	Rabbit
Species Reactivity	Human,Mouse,Rat
Specificity	The antibody detects endogenous levels of total RPL26L protein.
Tested Applications	ELISA,WB;WB:1:500-1:3000
Form	Rabbit IgG in phosphate buffered saline (without Mg ²⁺ and Ca ²⁺), pH 7.4, 150mM NaCl, 0.02% sodium azide and 50% glycerol.
Purification Method	The antibody was affinity-purified from rabbit antiserum by affinity-chromatography using epitope-specific immunogen.
Clonality	Polyclonal
Alias	60S ribosomal protein L26-like 1; RPL26L1; RPL26P1;
Product Type	Polyclonal Antibody
Immunogen Species	Homo sapiens (Human)
Target Names	RPL26L1

Image



Western blot analysis of extracts from HUVEC cells and MCF-7 cells, using RPL26L antibody.

Usage

For Research Use Only. Not for use in diagnostic or therapeutic procedures.