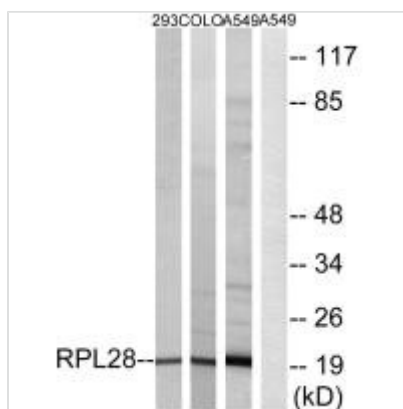




RPL28 Antibody

Product Code	CSB-PA294909
Storage	Upon receipt, store at -20°C or -80°C. Avoid repeated freeze.
Uniprot No.	P46779
Immunogen	Synthesized peptide derived from internal of Human RPL28.
Raised In	Rabbit
Species Reactivity	Human,Mouse,Rat
Specificity	The antibody detects endogenous levels of total RPL28 protein.
Tested Applications	ELISA,WB;WB:1:500-1:3000
Form	Rabbit IgG in phosphate buffered saline (without Mg ²⁺ and Ca ²⁺), pH 7.4, 150mM NaCl, 0.02% sodium azide and 50% glycerol.
Purification Method	The antibody was affinity-purified from rabbit antiserum by affinity-chromatography using epitope-specific immunogen.
Clonality	Polyclonal
Alias	FLJ43307; ribosomal protein L28; RL28;
Product Type	Polyclonal Antibody
Immunogen Species	Homo sapiens (Human)
Target Names	RPL28

Image



Western blot analysis of extracts from 293 cells, COLO cells and A549 cells, using RPL28 antibody.

Usage

For Research Use Only. Not for use in diagnostic or therapeutic procedures.