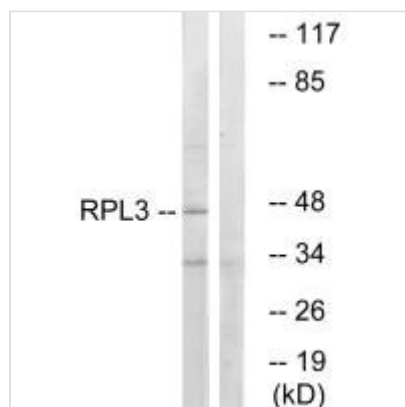




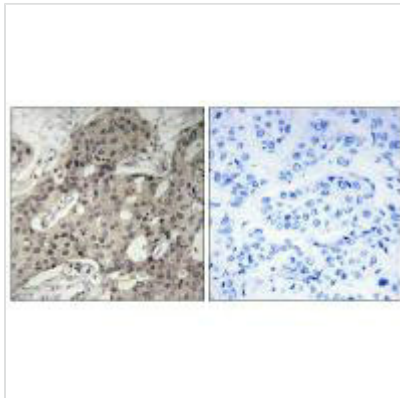
RPL3 Antibody

Product Code	CSB-PA283324
Storage	Upon receipt, store at -20°C or -80°C. Avoid repeated freeze.
Uniprot No.	P39023
Immunogen	Synthesized peptide derived from internal of Human RPL3.
Raised In	Rabbit
Species Reactivity	Human,Mouse,Rat
Specificity	The antibody detects endogenous levels of total RPL3 protein.
Tested Applications	ELISA,WB,IHC;WB:1:500-1:3000,IHC:1:50-1:100
Form	Rabbit IgG in phosphate buffered saline (without Mg ²⁺ and Ca ²⁺), pH 7.4, 150mM NaCl, 0.02% sodium azide and 50% glycerol.
Purification Method	The antibody was affinity-purified from rabbit antiserum by affinity-chromatography using epitope-specific immunogen.
Clonality	Polyclonal
Alias	60S ribosomal protein L3; HIV-1 TAR RNA binding protein B; RL3; RPL3; TARBP-B
Product Type	Polyclonal Antibody
Immunogen Species	Homo sapiens (Human)
Target Names	RPL3

Image



Western blot analysis of extracts from HT-29 cells, using RPL3 antibody.



Immunohistochemistry analysis of paraffin-embedded human breast carcinoma tissue using RPL3 antibody.