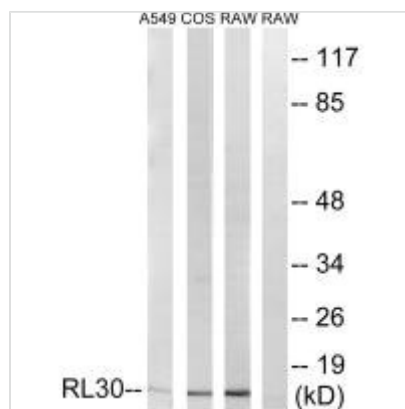




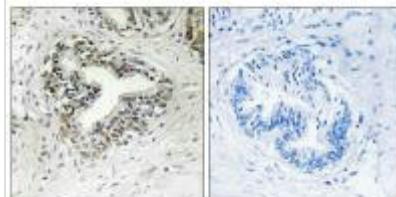
RPL30 Antibody

Product Code	CSB-PA814533
Storage	Upon receipt, store at -20°C or -80°C. Avoid repeated freeze.
Uniprot No.	P62888
Immunogen	Synthesized peptide derived from internal of Human RPL30.
Raised In	Rabbit
Species Reactivity	Human,Mouse
Specificity	The antibody detects endogenous levels of total RPL30 protein.
Tested Applications	ELISA,WB,IHC;WB:1:500-1:3000,IHC:1:50-1:100
Form	Rabbit IgG in phosphate buffered saline (without Mg ²⁺ and Ca ²⁺), pH 7.4, 150mM NaCl, 0.02% sodium azide and 50% glycerol.
Purification Method	The antibody was affinity-purified from rabbit antiserum by affinity-chromatography using epitope-specific immunogen.
Clonality	Polyclonal
Alias	60S ribosomal protein L30; RL30;
Product Type	Polyclonal Antibody
Immunogen Species	Homo sapiens (Human)
Target Names	RPL30

Image



Western blot analysis of extracts from A549 cells, COS-7 cells and RAW264.7 cells, using RPL30 antibody.



Immunohistochemistry analysis of paraffin-embedded human prostate carcinoma tissue using RPL30 antibody.