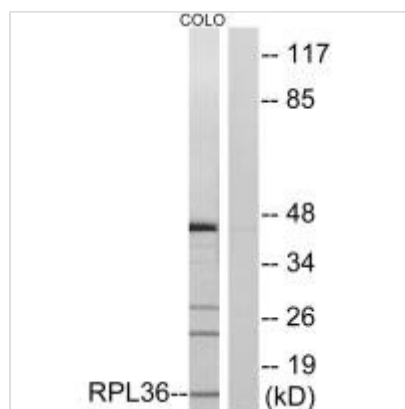




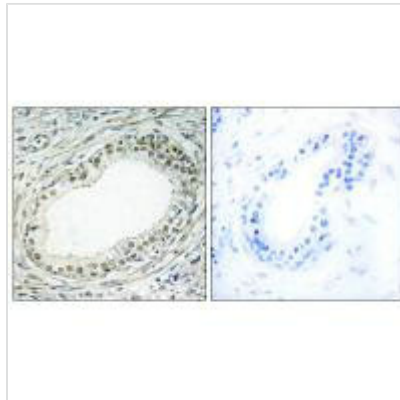
RPL36 Antibody

Product Code	CSB-PA138682
Storage	Upon receipt, store at -20°C or -80°C. Avoid repeated freeze.
Uniprot No.	Q9Y3U8
Immunogen	Synthesized peptide derived from internal of Human RPL36.
Raised In	Rabbit
Species Reactivity	Human,Mouse,Rat
Specificity	The antibody detects endogenous levels of total RPL36 protein.
Tested Applications	ELISA,WB,IHC,IF;WB:1:500-1:3000,IHC:1:50-1:100,IF:1:100-1:500
Form	Rabbit IgG in phosphate buffered saline (without Mg ²⁺ and Ca ²⁺), pH 7.4, 150mM NaCl, 0.02% sodium azide and 50% glycerol.
Purification Method	The antibody was affinity-purified from rabbit antiserum by affinity-chromatography using epitope-specific immunogen.
Clonality	Polyclonal
Alias	60S ribosomal protein L36;
Product Type	Polyclonal Antibody
Immunogen Species	Homo sapiens (Human)
Target Names	RPL36

Image



Western blot analysis of extracts from COLO cells, using RPL36 antibody.



Immunohistochemistry analysis of paraffin-embedded human prostate carcinoma tissue using RPL36 antibody.



Immunofluorescence analysis of A549 cells, using RPL36 antibody.