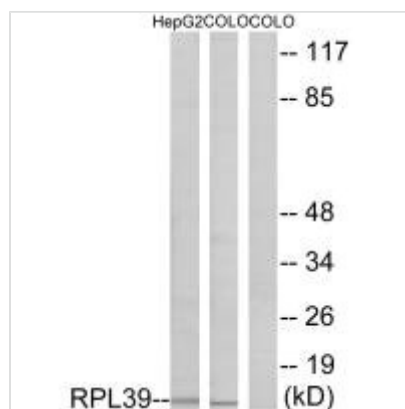




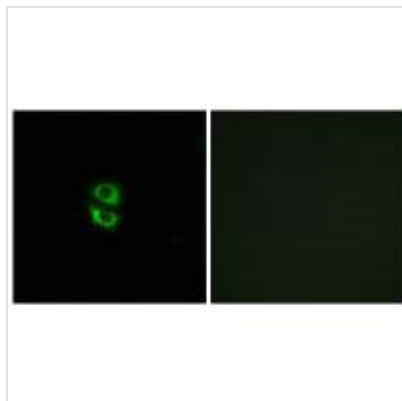
RPL39 Antibody

Product Code	CSB-PA050510
Storage	Upon receipt, store at -20°C or -80°C. Avoid repeated freeze.
Uniprot No.	P62891
Immunogen	Synthesized peptide derived from internal of Human RPL39.
Raised In	Rabbit
Species Reactivity	Human,Mouse,Rat
Specificity	The antibody detects endogenous levels of total RPL39 protein.
Tested Applications	ELISA,WB,IHC,IF;WB:1:500-1:3000,IHC:1:50-1:200,IF:1:100-1:200
Form	Rabbit IgG in phosphate buffered saline (without Mg ²⁺ and Ca ²⁺), pH 7.4, 150mM NaCl, 0.02% sodium azide and 50% glycerol.
Purification Method	The antibody was affinity-purified from rabbit antiserum by affinity-chromatography using epitope-specific immunogen.
Clonality	Polyclonal
Alias	60S ribosomal protein L39; RPL39;
Product Type	Polyclonal Antibody
Immunogen Species	Homo sapiens (Human)
Target Names	RPL39

Image



Western blot analysis of extracts from HepG2 cells and COLO cells, using RPL39 antibody.



Immunofluorescence analysis of A549 cells,
using RPL39 antibody.