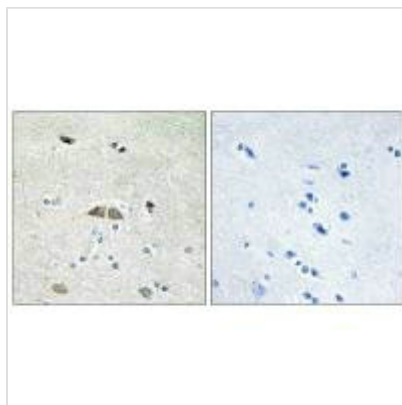




RPL39L Antibody

Product Code	CSB-PA983842
Storage	Upon receipt, store at -20°C or -80°C. Avoid repeated freeze.
Uniprot No.	Q96EH5
Immunogen	Synthesized peptide derived from internal of Human RL39L.
Raised In	Rabbit
Species Reactivity	Human
Specificity	The antibody detects endogenous levels of total RL39L protein.
Tested Applications	ELISA,IHC;IHC:1:50-1:100
Form	Rabbit IgG in phosphate buffered saline (without Mg ²⁺ and Ca ²⁺), pH 7.4, 150mM NaCl, 0.02% sodium azide and 50% glycerol.
Purification Method	The antibody was affinity-purified from rabbit antiserum by affinity-chromatography using epitope-specific immunogen.
Clonality	Polyclonal
Alias	60S ribosomal protein L39-like; L39-2;
Product Type	Polyclonal Antibody
Immunogen Species	Homo sapiens (Human)
Target Names	RPL39L

Image



Immunohistochemistry analysis of paraffin-embedded human brain tissue using RL39L antibody.