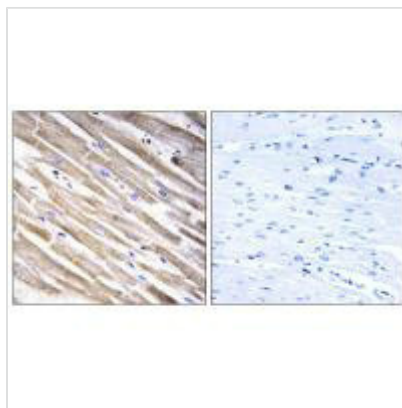




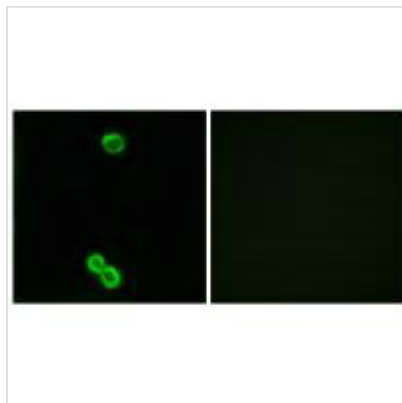
RPL3L Antibody

Product Code	CSB-PA157503
Storage	Upon receipt, store at -20°C or -80°C. Avoid repeated freeze.
Uniprot No.	Q92901
Immunogen	Synthesized peptide derived from internal of Human RPL3L.
Raised In	Rabbit
Species Reactivity	Human
Specificity	The antibody detects endogenous levels of total RPL3L protein.
Tested Applications	ELISA,IHC,IF;IHC:1:50-1:100,IF:1:100-1:500
Form	Rabbit IgG in phosphate buffered saline (without Mg ²⁺ and Ca ²⁺), pH 7.4, 150mM NaCl, 0.02% sodium azide and 50% glycerol.
Purification Method	The antibody was affinity-purified from rabbit antiserum by affinity-chromatography using epitope-specific immunogen.
Clonality	Polyclonal
Alias	60S ribosomal protein L3-like;
Product Type	Polyclonal Antibody
Immunogen Species	Homo sapiens (Human)
Target Names	RPL3L

Image



Immunohistochemistry analysis of paraffin-embedded human heart tissue using RPL3L antibody.



Immunofluorescence analysis of MCF-7 cells,
using RPL3L antibody.