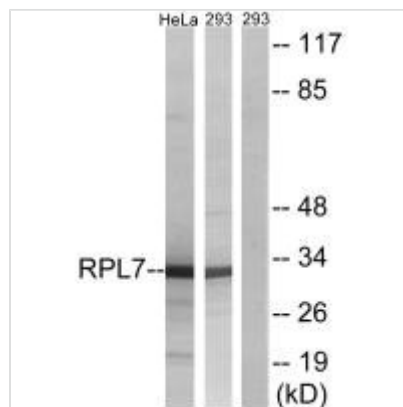




RPL5 Antibody

Product Code	CSB-PA276101
Storage	Upon receipt, store at -20°C or -80°C. Avoid repeated freeze.
Uniprot No.	P46777
Immunogen	Synthesized peptide derived from internal of Human RPL5.
Raised In	Rabbit
Species Reactivity	Human,Mouse,Rat
Specificity	The antibody detects endogenous levels of total RPL5 protein.
Tested Applications	ELISA,WB;WB:1:500-1:3000
Form	Rabbit IgG in phosphate buffered saline (without Mg ²⁺ and Ca ²⁺), pH 7.4, 150mM NaCl, 0.02% sodium azide and 50% glycerol.
Purification Method	The antibody was affinity-purified from rabbit antiserum by affinity-chromatography using epitope-specific immunogen.
Clonality	Polyclonal
Alias	60S ribosomal protein L5; RL5;
Product Type	Polyclonal Antibody
Immunogen Species	Homo sapiens (Human)
Target Names	RPL5

Image



Western blot analysis of extracts from HepG2 cells and Jurkat cells, using RPL5 antibody.

Usage For Research Use Only. Not for use in diagnostic or therapeutic procedures.