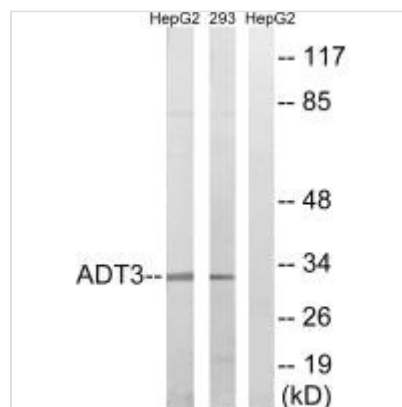




SLC25A6 Antibody

Product Code	CSB-PA238544
Storage	Upon receipt, store at -20°C or -80°C. Avoid repeated freeze.
Uniprot No.	P12236
Immunogen	Synthesized peptide derived from internal of Human SLC25A6.
Raised In	Rabbit
Species Reactivity	Human
Specificity	The antibody detects endogenous levels of total SLC25A6 protein.
Tested Applications	ELISA,WB;WB:1:500-1:3000
Form	Rabbit IgG in phosphate buffered saline (without Mg ²⁺ and Ca ²⁺), pH 7.4, 150mM NaCl, 0.02% sodium azide and 50% glycerol.
Purification Method	The antibody was affinity-purified from rabbit antiserum by affinity-chromatography using epitope-specific immunogen.
Clonality	Polyclonal
Alias	adenine nucleotide translocator 2; adenine nucleotide translocator 3; ADP; ATP carrier 3; ADP
Product Type	Polyclonal Antibody
Immunogen Species	Homo sapiens (Human)
Target Names	SLC25A6

Image



Western blot analysis of extracts from HepG2 cells and 293 cells, using SLC25A6 antibody.

Usage For Research Use Only. Not for use in diagnostic or therapeutic procedures.