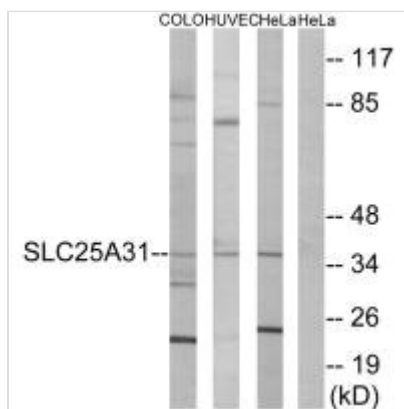




SLC25A31 Antibody

Product Code	CSB-PA076262
Storage	Upon receipt, store at -20°C or -80°C. Avoid repeated freeze.
Uniprot No.	Q9H0C2
Immunogen	Synthesized peptide derived from internal of Human SLC25A31.
Raised In	Rabbit
Species Reactivity	Human, Mouse
Specificity	The antibody detects endogenous levels of SLC25A31 protein.
Tested Applications	ELISA, WB; WB: 1:500-1:3000
Form	Rabbit IgG in phosphate buffered saline (without Mg ²⁺ and Ca ²⁺), pH 7.4, 150mM NaCl, 0.02% sodium azide and 50% glycerol.
Purification Method	The antibody was affinity-purified from rabbit antiserum by affinity-chromatography using epitope-specific immunogen.
Clonality	Polyclonal
Alias	adenine nucleotide translocator 4; ADP; ATP carrier protein 4; ADP/ATP translocase 4; ANT 4
Product Type	Polyclonal Antibody
Immunogen Species	Homo sapiens (Human)
Target Names	SLC25A31

Image



Western blot analysis of extracts from COLO cells, HUVEC cells and HeLa cells, using SLC25A31 antibody.

Usage For Research Use Only. Not for use in diagnostic or therapeutic procedures.