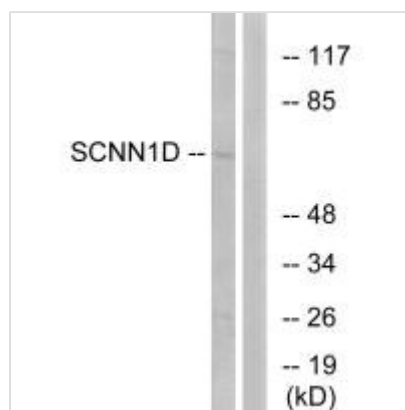




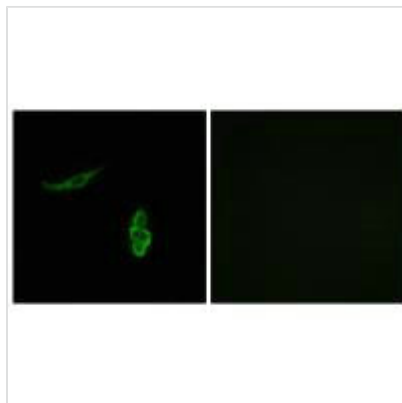
SCNN1D Antibody

| | |
|----------------------------|--|
| Product Code | CSB-PA989132 |
| Storage | Upon receipt, store at -20°C or -80°C. Avoid repeated freeze. |
| Uniprot No. | P51172 |
| Immunogen | Synthesized peptide derived from internal of Human SCNN1D. |
| Raised In | Rabbit |
| Species Reactivity | Human |
| Specificity | The antibody detects endogenous levels of total SCNN1D protein. |
| Tested Applications | ELISA,WB,IF;WB:1:500-1:3000,IF:1:100-1:500 |
| Form | Rabbit IgG in phosphate buffered saline (without Mg ²⁺ and Ca ²⁺), pH 7.4, 150mM NaCl, 0.02% sodium azide and 50% glycerol. |
| Purification Method | The antibody was affinity-purified from rabbit antiserum by affinity-chromatography using epitope-specific immunogen. |
| Clonality | Polyclonal |
| Alias | Amiloride-sensitive sodium channel subunit delta; Epithelial Na(+) channel subunit delta; Delta-ENaC; SCNED; Nonvoltage-gated sodium channel 1 subunit delta |
| Product Type | Polyclonal Antibody |
| Immunogen Species | Homo sapiens (Human) |
| Target Names | SCNN1D |

Image



Western blot analysis of extracts from RAW264.7 cells, using SCNN1D antibody.



Immunofluorescence analysis of A549 cells,
using SCNN1D antibody.