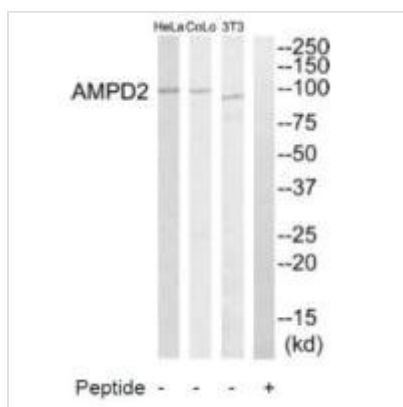




AMPD2 Antibody

Product Code	CSB-PA211918
Storage	Upon receipt, store at -20°C or -80°C. Avoid repeated freeze.
Uniprot No.	Q01433
Immunogen	Synthesized peptide derived from internal of Human AMPD2.
Raised In	Rabbit
Species Reactivity	Human
Specificity	The antibody detects endogenous levels of total AMPD2 protein.
Tested Applications	ELISA,WB;WB:1:500-1:3000
Form	Rabbit IgG in phosphate buffered saline (without Mg ²⁺ and Ca ²⁺), pH 7.4, 150mM NaCl, 0.02% sodium azide and 50% glycerol.
Purification Method	The antibody was affinity-purified from rabbit antiserum by affinity-chromatography using epitope-specific immunogen.
Clonality	Polyclonal
Alias	AMD2; AMP deaminase 2; AMP deaminase isoform L;
Product Type	Polyclonal Antibody
Immunogen Species	Homo sapiens (Human)
Target Names	AMPD2

Image



Western blot analysis of extracts from HeLa cells, NIH-3T3 cells and COLO205 cells, using AMPD2 antibody.

Usage

For Research Use Only. Not for use in diagnostic or therapeutic procedures.