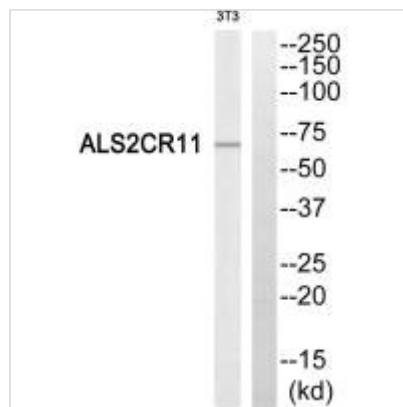




ALS2CR11 Antibody

Product Code	CSB-PA179816
Storage	Upon receipt, store at -20°C or -80°C. Avoid repeated freeze.
Uniprot No.	Q53TS8
Immunogen	Synthesized peptide derived from C-terminal of Human ALS2CR11.
Raised In	Rabbit
Species Reactivity	Human
Specificity	The antibody detects endogenous levels of total ALS2CR11 protein.
Tested Applications	ELISA, WB; WB: 1:500-1:3000
Form	Rabbit IgG in phosphate buffered saline (without Mg ²⁺ and Ca ²⁺), pH 7.4, 150mM NaCl, 0.02% sodium azide and 50% glycerol.
Purification Method	The antibody was affinity-purified from rabbit antiserum by affinity-chromatography using epitope-specific immunogen.
Clonality	Polyclonal
Alias	Amyotrophic lateral sclerosis 2 chromosomal region candidate gene 11 protein;
Product Type	Polyclonal Antibody
Immunogen Species	Homo sapiens (Human)
Target Names	C2CD6

Image



Western blot analysis of extracts from NIH/3T3 cells, using ALS2CR11 antibody.

Usage

For Research Use Only. Not for use in diagnostic or therapeutic procedures.