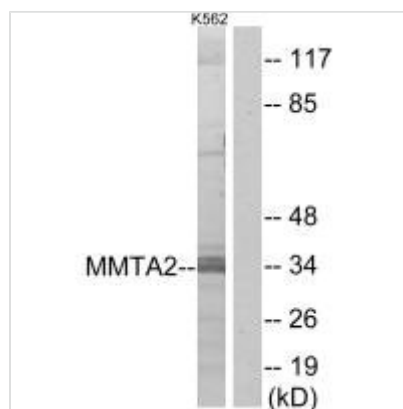




MMTAG2 Antibody

Product Code	CSB-PA557118
Storage	Upon receipt, store at -20°C or -80°C. Avoid repeated freeze.
Uniprot No.	Q9BU76
Immunogen	Synthesized peptide derived from N-terminal of Human MMTA2.
Raised In	Rabbit
Species Reactivity	Human,Mouse,Rat
Specificity	The antibody detects endogenous levels of total MMTA2 protein.
Tested Applications	ELISA,WB;WB:1:500-1:3000
Form	Rabbit IgG in phosphate buffered saline (without Mg ²⁺ and Ca ²⁺), pH 7.4, 150mM NaCl, 0.02% sodium azide and 50% glycerol.
Purification Method	The antibody was affinity-purified from rabbit antiserum by affinity-chromatography using epitope-specific immunogen.
Clonality	Polyclonal
Alias	hMMTAG2; Multiple myeloma tumor-associated protein 2; MMTAG2; C1orf35;
Product Type	Polyclonal Antibody
Immunogen Species	Homo sapiens (Human)
Target Names	MMTAG2

Image



Western blot analysis of extracts from K562 cells, using MMTA2 antibody.

Usage

For Research Use Only. Not for use in diagnostic or therapeutic procedures.