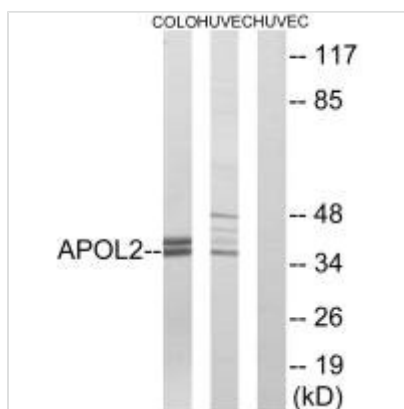




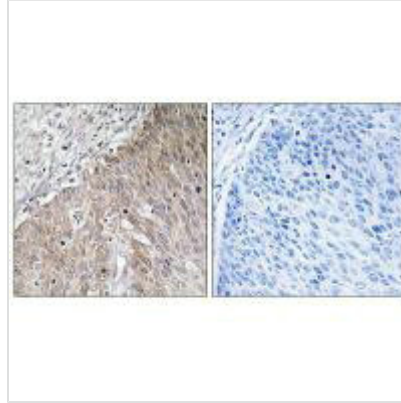
APOL2 Antibody

Product Code	CSB-PA953575
Storage	Upon receipt, store at -20°C or -80°C. Avoid repeated freeze.
Uniprot No.	Q9BQE5
Immunogen	Synthesized peptide derived from internal of Human APOL2.
Raised In	Rabbit
Species Reactivity	Human
Specificity	The antibody detects endogenous levels of total APOL2 protein.
Tested Applications	ELISA,WB,IHC,IF;WB:1:500-1:3000,IHC:1:50-1:100,IF:1:100-1:500
Form	Rabbit IgG in phosphate buffered saline (without Mg ²⁺ and Ca ²⁺), pH 7.4, 150mM NaCl, 0.02% sodium azide and 50% glycerol.
Purification Method	The antibody was affinity-purified from rabbit antiserum by affinity-chromatography using epitope-specific immunogen.
Clonality	Polyclonal
Alias	apoL-II; apolipoprotein L-II; apolipoprotein-L2;
Product Type	Polyclonal Antibody
Immunogen Species	Homo sapiens (Human)
Target Names	APOL2

Image



Western blot analysis of extracts from COLO cells and HUVEC cells, using APOL2 antibody.



Immunohistochemistry analysis of paraffin-embedded human cervix carcinoma tissue using APOL2 antibody.



Immunofluorescence analysis of MCF-7 cells, using APOL2 antibody.

Usage

For Research Use Only. Not for use in diagnostic or therapeutic procedures.