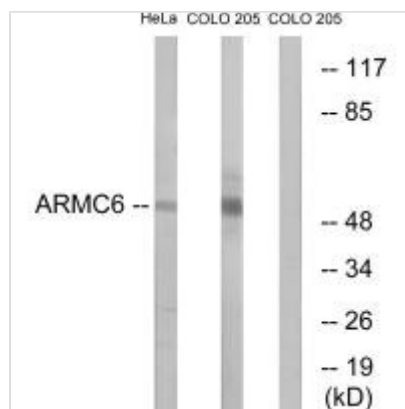




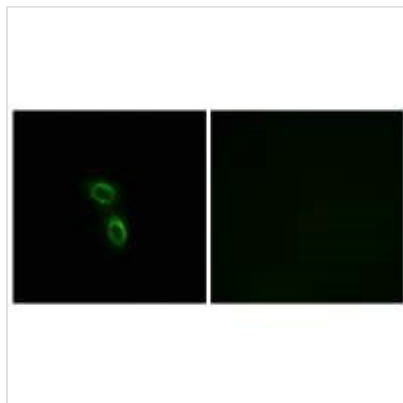
ARMC6 Antibody

Product Code	CSB-PA776303
Storage	Upon receipt, store at -20°C or -80°C. Avoid repeated freeze.
Uniprot No.	Q6NXE6
Immunogen	Synthesized peptide derived from internal of Human ARMC6.
Raised In	Rabbit
Species Reactivity	Human,Mouse,Rat
Specificity	The antibody detects endogenous levels of total ARMC6 protein.
Tested Applications	ELISA,WB,IF;WB:1:500-1:3000,IF:1:100-1:500
Form	Rabbit IgG in phosphate buffered saline (without Mg ²⁺ and Ca ²⁺), pH 7.4, 150mM NaCl, 0.02% sodium azide and 50% glycerol.
Purification Method	The antibody was affinity-purified from rabbit antiserum by affinity-chromatography using epitope-specific immunogen.
Clonality	Polyclonal
Alias	armadillo repeat containing 6;
Product Type	Polyclonal Antibody
Immunogen Species	Homo sapiens (Human)
Target Names	ARMC6

Image



Western blot analysis of extracts from HeLa cells and COLO cells, using ARMC6 antibody.



Immunofluorescence analysis of A549 cells,
using ARMC6 antibody.