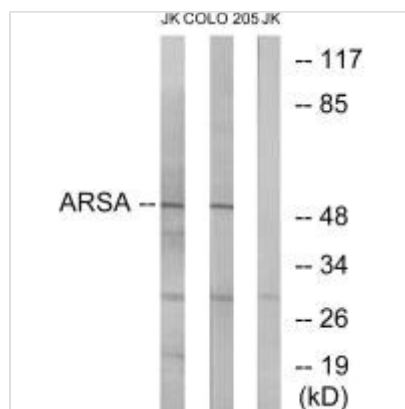




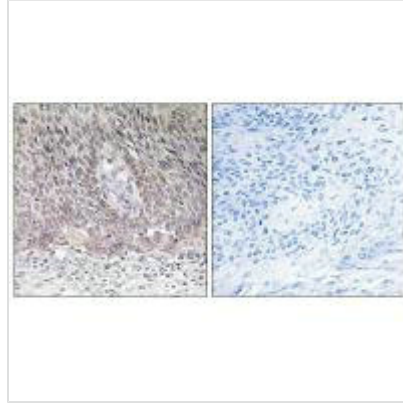
ARSA Antibody

Product Code	CSB-PA901669
Storage	Upon receipt, store at -20°C or -80°C. Avoid repeated freeze.
Uniprot No.	P15289
Immunogen	Synthesized peptide derived from internal of Human ARSA.
Raised In	Rabbit
Species Reactivity	Human,Mouse,Rat
Specificity	The antibody detects endogenous levels of total ARSA protein.
Tested Applications	ELISA,WB,IHC;WB:1:500-1:3000,IHC:1:50-1:100
Form	Rabbit IgG in phosphate buffered saline (without Mg ²⁺ and Ca ²⁺), pH 7.4, 150mM NaCl, 0.02% sodium azide and 50% glycerol.
Purification Method	The antibody was affinity-purified from rabbit antiserum by affinity-chromatography using epitope-specific immunogen.
Clonality	Polyclonal
Alias	arylsulfatase A; ASA; cerebroside-sulfatase; EC 3.1.6.8; MLD
Product Type	Polyclonal Antibody
Immunogen Species	Homo sapiens (Human)
Target Names	ARSA

Image



Western blot analysis of extracts from Jurkat cells and COLO cells, using ARSA antibody.



Immunohistochemistry analysis of paraffin-embedded human cervix carcinoma tissue using ARSA antibody.

Usage

For Research Use Only. Not for use in diagnostic or therapeutic procedures.