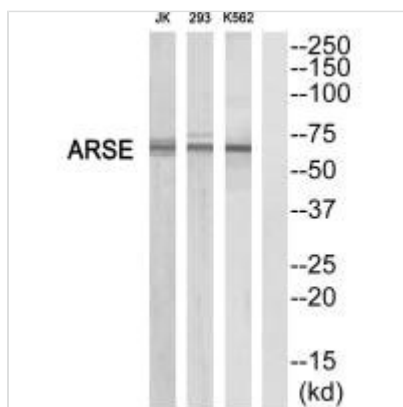




ARSE Antibody

Product Code	CSB-PA027867
Storage	Upon receipt, store at -20°C or -80°C. Avoid repeated freeze.
Uniprot No.	P51690
Immunogen	Synthesized peptide derived from Internal of Human ARSE.
Raised In	Rabbit
Species Reactivity	Human
Specificity	The antibody detects endogenous levels of total ARSE protein.
Tested Applications	ELISA,WB;WB:1:500-1:3000
Form	Rabbit IgG in phosphate buffered saline (without Mg ²⁺ and Ca ²⁺), pH 7.4, 150mM NaCl, 0.02% sodium azide and 50% glycerol.
Purification Method	The antibody was affinity-purified from rabbit antiserum by affinity-chromatography using epitope-specific immunogen.
Clonality	Polyclonal
Alias	ARSE; Arylsulfatase E; arylsulfatase E (chondrodysplasia punctata 1); ASE; CDPX
Product Type	Polyclonal Antibody
Immunogen Species	Homo sapiens (Human)
Target Names	ARSE

Image



Western blot analysis of extracts from K562/293/Jurkat cells, using ARSE antibody.

Usage For Research Use Only. Not for use in diagnostic or therapeutic procedures.