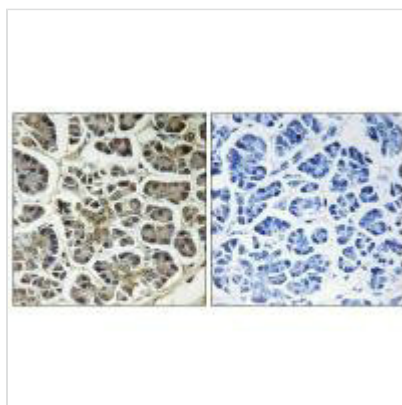




ATP5G2 Antibody

Product Code	CSB-PA697579
Storage	Upon receipt, store at -20°C or -80°C. Avoid repeated freeze.
Uniprot No.	Q06055
Immunogen	Synthesized peptide derived from internal of Human ATP5G2.
Raised In	Rabbit
Species Reactivity	Human
Specificity	The antibody detects endogenous levels of total ATP5G2 protein.
Tested Applications	ELISA,IHC;IHC:1:50-1:100
Form	Rabbit IgG in phosphate buffered saline (without Mg ²⁺ and Ca ²⁺), pH 7.4, 150mM NaCl, 0.02% sodium azide and 50% glycerol.
Purification Method	The antibody was affinity-purified from rabbit antiserum by affinity-chromatography using epitope-specific immunogen.
Clonality	Polyclonal
Alias	ATP synthase lipid-binding protein; mitochondrial; ATP synthase proteolipid P2; ATPase protein 9; ATPase subunit c
Product Type	Polyclonal Antibody
Immunogen Species	Homo sapiens (Human)
Target Names	ATP5G2

Image



Immunohistochemistry analysis of paraffin-embedded human pancreas tissue using ATP5G2 antibody.