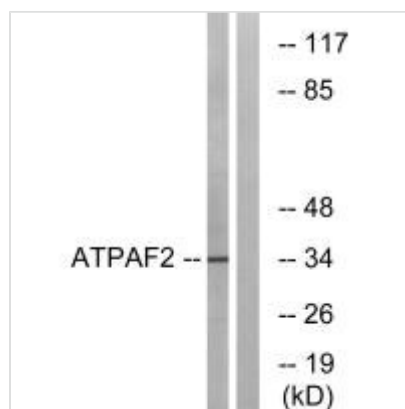




ATPAF2 Antibody

Product Code	CSB-PA962420
Storage	Upon receipt, store at -20°C or -80°C. Avoid repeated freeze.
Uniprot No.	Q8N5M1
Immunogen	Synthesized peptide derived from internal of Human ATPAF2.
Raised In	Rabbit
Species Reactivity	Human, Mouse
Specificity	The antibody detects endogenous levels of total ATPAF2 protein.
Tested Applications	ELISA, WB; WB: 1:500-1:3000
Form	Rabbit IgG in phosphate buffered saline (without Mg ²⁺ and Ca ²⁺), pH 7.4, 150mM NaCl, 0.02% sodium azide and 50% glycerol.
Purification Method	The antibody was affinity-purified from rabbit antiserum by affinity-chromatography using epitope-specific immunogen.
Clonality	Polyclonal
Alias	ATP synthase mitochondrial F1 complex assembly factor 2; ATP12; ATPF2;
Product Type	Polyclonal Antibody
Immunogen Species	Homo sapiens (Human)
Target Names	ATPAF2

Image



Western blot analysis of extracts from Jurkat cells, using ATPAF2 antibody.

Usage

For Research Use Only. Not for use in diagnostic or therapeutic procedures.