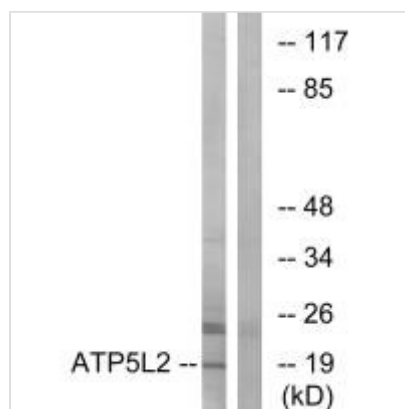




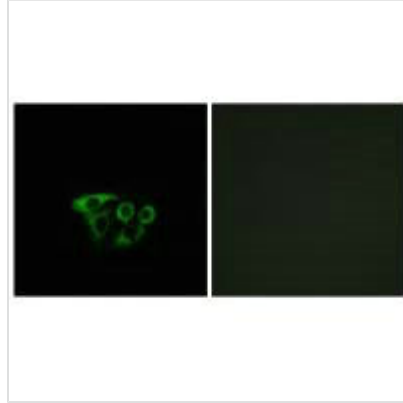
ATP5L2 Antibody

Product Code	CSB-PA776288
Storage	Upon receipt, store at -20°C or -80°C. Avoid repeated freeze.
Uniprot No.	Q7Z4Y8
Immunogen	Synthesized peptide derived from internal of Human ATP5L2.
Raised In	Rabbit
Species Reactivity	Human
Specificity	The antibody detects endogenous levels of total ATP5L2 protein.
Tested Applications	ELISA,WB,IF;WB:1:500-1:3000,IF:1:100-1:500
Form	Rabbit IgG in phosphate buffered saline (without Mg ²⁺ and Ca ²⁺), pH 7.4, 150mM NaCl, 0.02% sodium azide and 50% glycerol.
Purification Method	The antibody was affinity-purified from rabbit antiserum by affinity-chromatography using epitope-specific immunogen.
Clonality	Polyclonal
Alias	ATP synthase subunit g 2; mitochondrial; ATPase subunit g 2; ATP5K2;
Product Type	Polyclonal Antibody
Immunogen Species	Homo sapiens (Human)
Target Names	ATP5L2

Image



Western blot analysis of extracts from A549 cells, using ATP5L2 antibody.



Immunofluorescence analysis of A549 cells, using ATP5L2 antibody.

Usage

For Research Use Only. Not for use in diagnostic or therapeutic procedures.