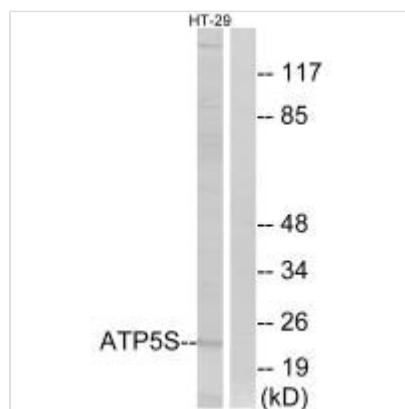




ATP5S Antibody

Product Code	CSB-PA263595
Storage	Upon receipt, store at -20°C or -80°C. Avoid repeated freeze.
Uniprot No.	Q99766
Immunogen	Synthesized peptide derived from internal of Human ATP5S.
Raised In	Rabbit
Species Reactivity	Human,Mouse
Specificity	The antibody detects endogenous levels of total ATP5S protein.
Tested Applications	ELISA,WB;WB:1:500-1:3000
Form	Rabbit IgG in phosphate buffered saline (without Mg ²⁺ and Ca ²⁺), pH 7.4, 150mM NaCl, 0.02% sodium azide and 50% glycerol.
Purification Method	The antibody was affinity-purified from rabbit antiserum by affinity-chromatography using epitope-specific immunogen.
Clonality	Polyclonal
Alias	ATP synthase subunit s; mitochondrial [Precursor]; ATP synthase-coupling factor B; Mitochondrial ATP synthase regulatory component factor B; ATP5S
Product Type	Polyclonal Antibody
Immunogen Species	Homo sapiens (Human)
Target Names	ATP5S

Image



Western blot analysis of extracts from HT-29 cells, using ATP5S antibody.