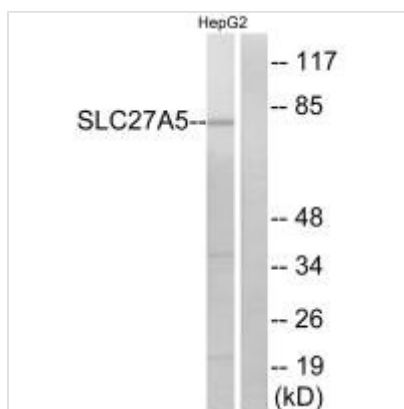




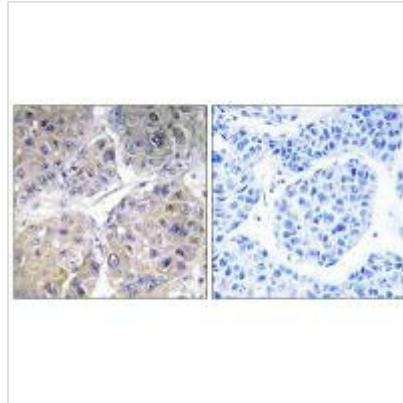
SLC27A5 Antibody

Product Code	CSB-PA876368
Storage	Upon receipt, store at -20°C or -80°C. Avoid repeated freeze.
Uniprot No.	Q9Y2P5
Immunogen	Synthesized peptide derived from internal of Human SLC27A5.
Raised In	Rabbit
Species Reactivity	Human
Specificity	The antibody detects endogenous levels of total SLC27A5 protein.
Tested Applications	ELISA,WB,IHC,IF;WB:1:500-1:3000,IHC:1:50-1:100,IF:1:100-1:500
Form	Rabbit IgG in phosphate buffered saline (without Mg ²⁺ and Ca ²⁺), pH 7.4, 150mM NaCl, 0.02% sodium azide and 50% glycerol.
Purification Method	The antibody was affinity-purified from rabbit antiserum by affinity-chromatography using epitope-specific immunogen.
Clonality	Polyclonal
Alias	EC 6.2.1.7; FACVL3; FATP5; MGC143799; S27A5
Product Type	Polyclonal Antibody
Immunogen Species	Homo sapiens (Human)
Target Names	SLC27A5

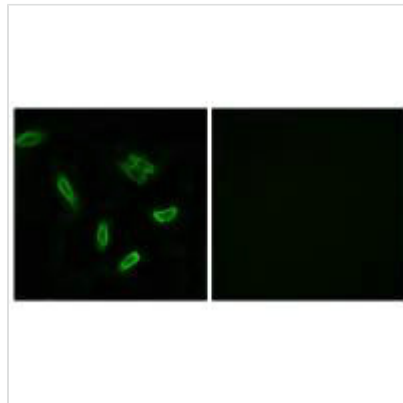
Image



Western blot analysis of extracts from HepG2 cells, using SLC27A5 antibody.



Immunohistochemistry analysis of paraffin-embedded human liver carcinoma tissue using SLC27A5 antibody.



Immunofluorescence analysis of A549 cells, using SLC27A5 antibody.

Usage

For Research Use Only. Not for use in diagnostic or therapeutic procedures.