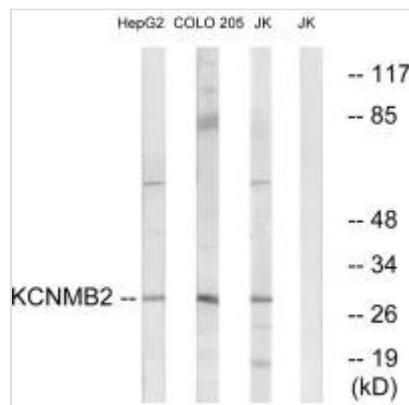




KCNMB2 Antibody

Product Code	CSB-PA130865
Storage	Upon receipt, store at -20°C or -80°C. Avoid repeated freeze.
Uniprot No.	Q9Y691
Immunogen	Synthesized peptide derived from internal of Human KCNMB2.
Raised In	Rabbit
Species Reactivity	Human,Mouse,Rat
Specificity	The antibody detects endogenous levels of total KCNMB2 protein.
Tested Applications	ELISA,WB;WB:1:500-1:3000
Form	Rabbit IgG in phosphate buffered saline (without Mg ²⁺ and Ca ²⁺), pH 7.4, 150mM NaCl, 0.02% sodium azide and 50% glycerol.
Purification Method	The antibody was affinity-purified from rabbit antiserum by affinity-chromatography using epitope-specific immunogen.
Clonality	Polyclonal
Alias	BK channel beta-2; BKbeta2; calcium-activated potassium channel beta-2; calcium-activated potassium channel; subfamily M beta-2
Product Type	Polyclonal Antibody
Immunogen Species	Homo sapiens (Human)
Target Names	KCNMB2

Image



Western blot analysis of extracts from HepG2 cells, COLO cells and Jurkat cells, using KCNMB2 antibody.

Usage For Research Use Only. Not for use in diagnostic or therapeutic procedures.