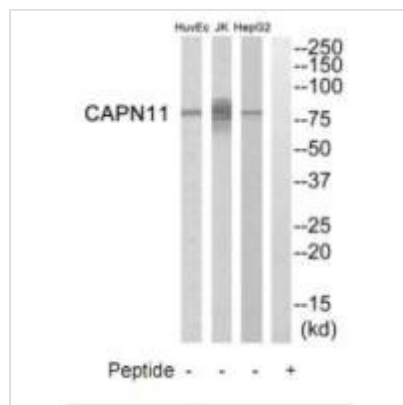




CAPN11 Antibody

Product Code	CSB-PA136572
Storage	Upon receipt, store at -20°C or -80°C. Avoid repeated freeze.
Uniprot No.	Q9UMQ6
Immunogen	Synthesized peptide derived from internal of Human CAPN11.
Raised In	Rabbit
Species Reactivity	Human
Specificity	The antibody detects endogenous levels of total CAPN11 protein.
Tested Applications	ELISA, WB; WB: 1:500-1:3000
Form	Rabbit IgG in phosphate buffered saline (without Mg ²⁺ and Ca ²⁺), pH 7.4, 150mM NaCl, 0.02% sodium azide and 50% glycerol.
Purification Method	The antibody was affinity-purified from rabbit antiserum by affinity-chromatography using epitope-specific immunogen.
Clonality	Polyclonal
Alias	Calpain-11; Calcium-activated neutral proteinase 11; CANP 11;
Product Type	Polyclonal Antibody
Immunogen Species	Homo sapiens (Human)
Target Names	CAPN11

Image



Western blot analysis of extracts from HepG2 cells, Jurkat cells and HuvEc cells, using CAPN11 antibody.