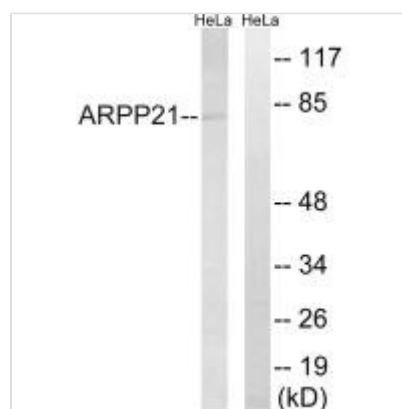




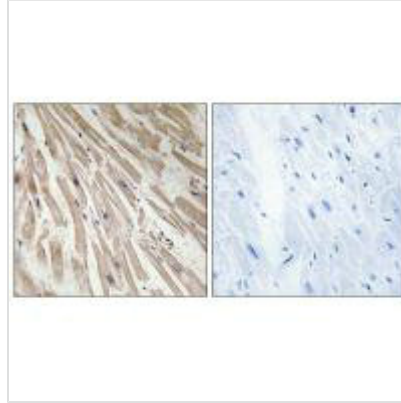
ARPP21 Antibody

Product Code	CSB-PA591170
Storage	Upon receipt, store at -20°C or -80°C. Avoid repeated freeze.
Uniprot No.	Q9UBL0
Immunogen	Synthesized peptide derived from internal of Human ARPP21.
Raised In	Rabbit
Species Reactivity	Human
Specificity	The antibody detects endogenous levels of total ARPP21 protein.
Tested Applications	ELISA,WB,IHC;WB:1:500-1:3000,IHC:1:50-1:100
Form	Rabbit IgG in phosphate buffered saline (without Mg ²⁺ and Ca ²⁺), pH 7.4, 150mM NaCl, 0.02% sodium azide and 50% glycerol.
Purification Method	The antibody was affinity-purified from rabbit antiserum by affinity-chromatography using epitope-specific immunogen.
Clonality	Polyclonal
Alias	cAMP-regulated phosphoprotein 21; ARPP-21; Thymocyte cAMP-regulated phosphoprotein;
Product Type	Polyclonal Antibody
Immunogen Species	Homo sapiens (Human)
Target Names	ARPP21

Image



Western blot analysis of extracts from HeLa cells, using ARPP21 antibody.



Immunohistochemistry analysis of paraffin-embedded human heart tissue, using ARPP21 antibody.

Usage

For Research Use Only. Not for use in diagnostic or therapeutic procedures.