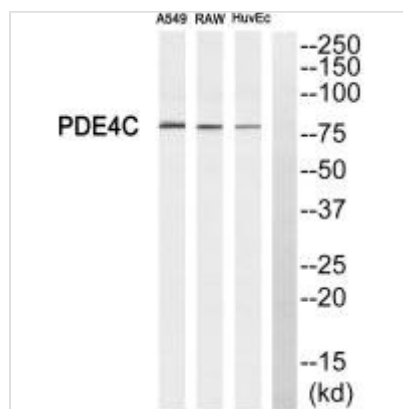




PDE4C Antibody

Product Code	CSB-PA436586
Storage	Upon receipt, store at -20°C or -80°C. Avoid repeated freeze.
Uniprot No.	Q08493
Immunogen	Synthesized peptide derived from internal of Human PDE4C.
Raised In	Rabbit
Species Reactivity	Human
Specificity	The antibody detects endogenous levels of total PDE4C protein.
Tested Applications	ELISA, WB; WB: 1:500-1:3000
Form	Rabbit IgG in phosphate buffered saline (without Mg ²⁺ and Ca ²⁺), pH 7.4, 150mM NaCl, 0.02% sodium azide and 50% glycerol.
Purification Method	The antibody was affinity-purified from rabbit antiserum by affinity-chromatography using epitope-specific immunogen.
Clonality	Polyclonal
Alias	cAMP-specific 3; 5-cyclic phosphodiesterase 4C; CN4C; DPDE1; PDE21
Product Type	Polyclonal Antibody
Immunogen Species	Homo sapiens (Human)
Target Names	PDE4C

Image



Western blot analysis of extracts from A549 cells, RAW264.7 cells and HuvEc cells, using PDE4C antibody.