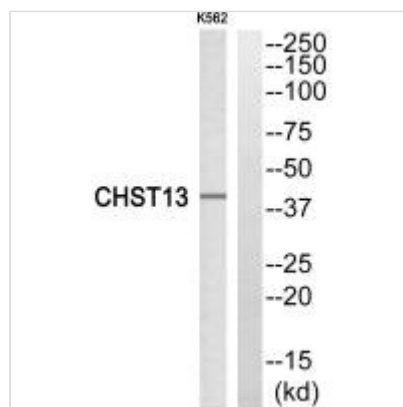




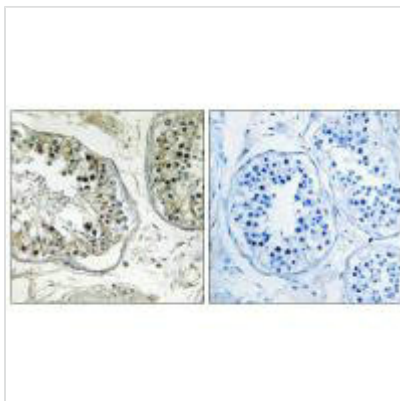
CHST13 Antibody

| | |
|----------------------------|--|
| Product Code | CSB-PA225983 |
| Storage | Upon receipt, store at -20°C or -80°C. Avoid repeated freeze. |
| Uniprot No. | Q8NET6 |
| Immunogen | Synthesized peptide derived from internal of Human CHST13. |
| Raised In | Rabbit |
| Species Reactivity | Human |
| Specificity | The antibody detects endogenous levels of total CHST13 protein. |
| Tested Applications | ELISA, WB, IHC; WB: 1:500-1:3000, IHC: 1:50-1:100 |
| Form | Rabbit IgG in phosphate buffered saline (without Mg ²⁺ and Ca ²⁺), pH 7.4, 150mM NaCl, 0.02% sodium azide and 50% glycerol. |
| Purification Method | The antibody was affinity-purified from rabbit antiserum by affinity-chromatography using epitope-specific immunogen. |
| Clonality | Polyclonal |
| Alias | Tumor necrosis factor receptor superfamily member 6B; Decoy receptor for Fas ligand; Decoy receptor 3; DcR3; M68 |
| Product Type | Polyclonal Antibody |
| Immunogen Species | Homo sapiens (Human) |
| Target Names | CHST13 |

Image



Western blot analysis of extracts from K562 cells, using CHST13 antibody.



Immunohistochemistry analysis of paraffin-embedded human testis tissue, using CHST13 antibody.