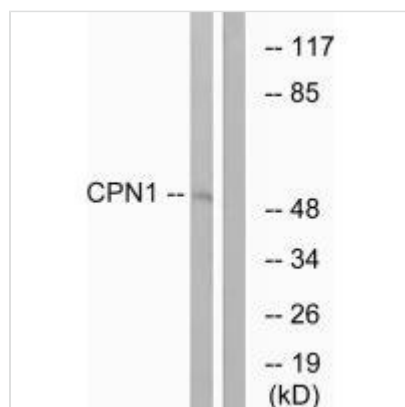




CPN1 Antibody

Product Code	CSB-PA447827
Storage	Upon receipt, store at -20°C or -80°C. Avoid repeated freeze.
Uniprot No.	P15169
Immunogen	Synthesized peptide derived from C-terminal of Human CPN1.
Raised In	Rabbit
Species Reactivity	Human
Specificity	The antibody detects endogenous levels of total CPN1 protein.
Tested Applications	ELISA, WB; WB: 1:500-1:3000
Form	Rabbit IgG in phosphate buffered saline (without Mg ²⁺ and Ca ²⁺), pH 7.4, 150mM NaCl, 0.02% sodium azide and 50% glycerol.
Purification Method	The antibody was affinity-purified from rabbit antiserum by affinity-chromatography using epitope-specific immunogen.
Clonality	Polyclonal
Alias	anaphylatoxin inactivator; arginine carboxypeptidase; carboxypeptidase N 1; carboxypeptidase N catalytic; carboxypeptidase N polypeptide 1 50 kD
Product Type	Polyclonal Antibody
Immunogen Species	Homo sapiens (Human)
Target Names	CPN1

Image



Western blot analysis of extracts from RAW264.7 cells, using CPN1 antibody.

Usage For Research Use Only. Not for use in diagnostic or therapeutic procedures.