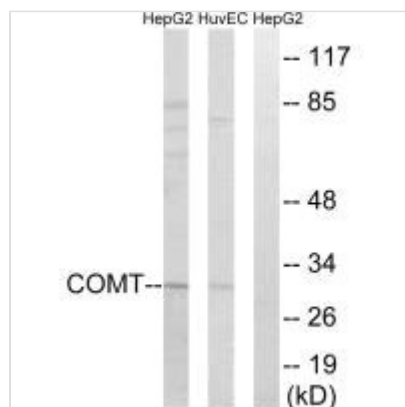




COMT Antibody

| | |
|----------------------------|--|
| Product Code | CSB-PA443797 |
| Storage | Upon receipt, store at -20°C or -80°C. Avoid repeated freeze. |
| Uniprot No. | P21964 |
| Immunogen | Synthesized peptide derived from internal of Human COMT. |
| Raised In | Rabbit |
| Species Reactivity | Human |
| Specificity | The antibody detects endogenous levels of total COMT protein. |
| Tested Applications | ELISA, WB; WB: 1:500-1:3000 |
| Form | Rabbit IgG in phosphate buffered saline (without Mg ²⁺ and Ca ²⁺), pH 7.4, 150mM NaCl, 0.02% sodium azide and 50% glycerol. |
| Purification Method | The antibody was affinity-purified from rabbit antiserum by affinity-chromatography using epitope-specific immunogen. |
| Clonality | Polyclonal |
| Alias | Catechol O-methyltransferase; membrane-bound form; catechol-O-methyltransferase; EC 2.1.1.6; MB-COMT |
| Product Type | Polyclonal Antibody |
| Immunogen Species | Homo sapiens (Human) |
| Target Names | COMT |

Image



Western blot analysis of extracts from HepG2 cells and HUVEC cells, using COMT antibody.