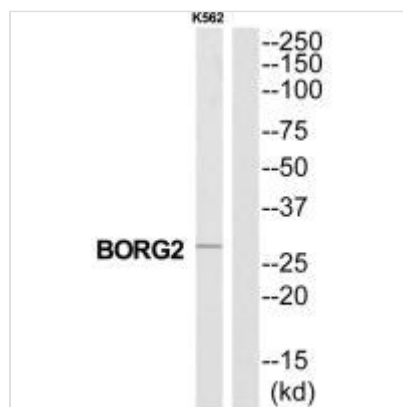




CDC42EP3 Antibody

Product Code	CSB-PA921142
Storage	Upon receipt, store at -20°C or -80°C. Avoid repeated freeze.
Uniprot No.	Q9UKI2
Immunogen	Synthesized peptide derived from N-terminal of Human CDC42EP3.
Raised In	Rabbit
Species Reactivity	Human,Mouse,Rat
Specificity	The antibody detects endogenous levels of total CDC42EP3 protein.
Tested Applications	ELISA,WB;WB:1:500-1:3000
Form	Rabbit IgG in phosphate buffered saline (without Mg ²⁺ and Ca ²⁺), pH 7.4, 150mM NaCl, 0.02% sodium azide and 50% glycerol.
Purification Method	The antibody was affinity-purified from rabbit antiserum by affinity-chromatography using epitope-specific immunogen.
Clonality	Polyclonal
Alias	Binder of Rho GTPases 2; BORG2; CDC42 effector protein (Rho GTPase binding) 3; Cdc42 effector protein 3; CDC42EP3
Product Type	Polyclonal Antibody
Immunogen Species	Homo sapiens (Human)
Target Names	CDC42EP3

Image



Western blot analysis of extracts from K562 cells, using CDC42EP3 antibody.

Usage For Research Use Only. Not for use in diagnostic or therapeutic procedures.