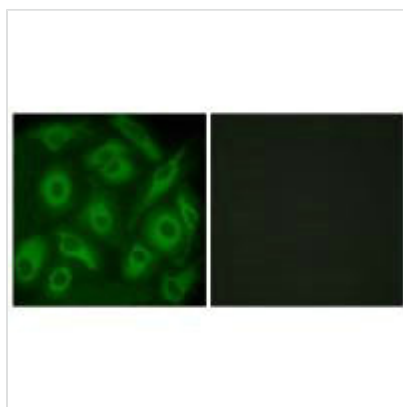




CDH23 Antibody

Product Code	CSB-PA207598
Storage	Upon receipt, store at -20°C or -80°C. Avoid repeated freeze.
Uniprot No.	Q9H251
Immunogen	Synthesized peptide derived from internal of Human CDH23.
Raised In	Rabbit
Species Reactivity	Human, Mouse
Specificity	The antibody detects endogenous levels of total CDH23 protein.
Tested Applications	ELISA, IF; IF: 1:100-1:500
Form	Rabbit IgG in phosphate buffered saline (without Mg ²⁺ and Ca ²⁺), pH 7.4, 150mM NaCl, 0.02% sodium azide and 50% glycerol.
Purification Method	The antibody was affinity-purified from rabbit antiserum by affinity-chromatography using epitope-specific immunogen.
Clonality	Polyclonal
Alias	DFNB12; USH1D; cadherin 23 C1; cadherin 23 C2; cadherin related 23
Product Type	Polyclonal Antibody
Immunogen Species	Homo sapiens (Human)
Target Names	CDH23

Image



Immunofluorescence analysis of HeLa cells, using CDH23 antibody.

Usage

For Research Use Only. Not for use in diagnostic or therapeutic procedures.