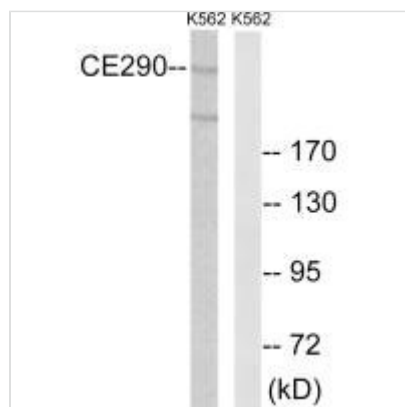




CEP290 Antibody

Product Code	CSB-PA758165
Storage	Upon receipt, store at -20°C or -80°C. Avoid repeated freeze.
Uniprot No.	O15078
Immunogen	Synthesized peptide derived from internal of Human CEP290.
Raised In	Rabbit
Species Reactivity	Human
Specificity	The antibody detects endogenous levels of total CEP290 protein.
Tested Applications	ELISA,WB;WB:1:500-1:3000
Form	Rabbit IgG in phosphate buffered saline (without Mg ²⁺ and Ca ²⁺), pH 7.4, 150mM NaCl, 0.02% sodium azide and 50% glycerol.
Purification Method	The antibody was affinity-purified from rabbit antiserum by affinity-chromatography using epitope-specific immunogen.
Clonality	Polyclonal
Alias	CE290; centrosomal protein Cep290; CTCL tumor antigen se2-2; JBTS5; JBTS6
Product Type	Polyclonal Antibody
Immunogen Species	Homo sapiens (Human)
Target Names	CEP290

Image



Western blot analysis of extracts from K562 cells, using CEP290 antibody.