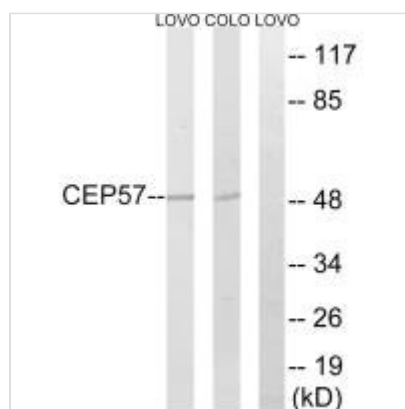




CEP57 Antibody

Product Code	CSB-PA095230
Storage	Upon receipt, store at -20°C or -80°C. Avoid repeated freeze.
Uniprot No.	Q86XR8
Immunogen	Synthesized peptide derived from internal of Human CEP57.
Raised In	Rabbit
Species Reactivity	Human
Specificity	The antibody detects endogenous levels of total CEP57 protein.
Tested Applications	ELISA, WB; WB: 1:500-1:3000
Form	Rabbit IgG in phosphate buffered saline (without Mg ²⁺ and Ca ²⁺), pH 7.4, 150mM NaCl, 0.02% sodium azide and 50% glycerol.
Purification Method	The antibody was affinity-purified from rabbit antiserum by affinity-chromatography using epitope-specific immunogen.
Clonality	Polyclonal
Alias	centrosomal protein of 57 kDa; FGF2-interacting protein; PIG8; testis-specific protein 57; translokin
Product Type	Polyclonal Antibody
Immunogen Species	Homo sapiens (Human)
Target Names	CEP57

Image



Western blot analysis of extracts from LOVO cells and COLO cells, using MRPS7 antibody.

Usage For Research Use Only. Not for use in diagnostic or therapeutic procedures.