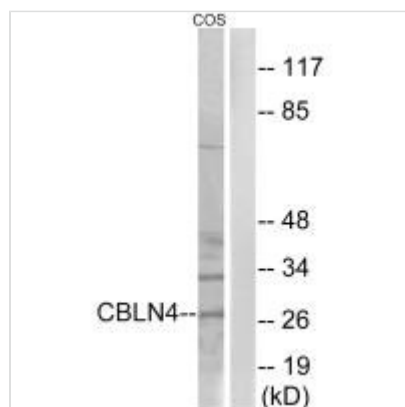




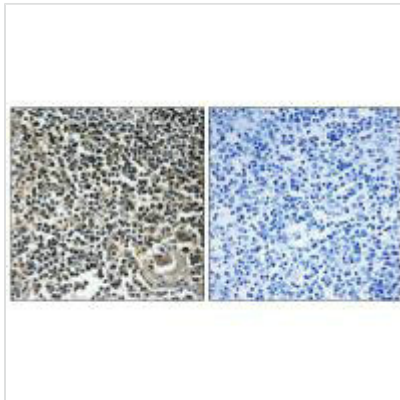
CBLN4 Antibody

Product Code	CSB-PA775289
Storage	Upon receipt, store at -20°C or -80°C. Avoid repeated freeze.
Uniprot No.	Q9NTU7
Immunogen	Synthesized peptide derived from internal of Human CBLN4.
Raised In	Rabbit
Species Reactivity	Human,Mouse
Specificity	The antibody detects endogenous levels of total CBLN4 protein.
Tested Applications	ELISA,WB,IHC;WB:1:500-1:3000,IHC:1:50-1:100
Form	Rabbit IgG in phosphate buffered saline (without Mg ²⁺ and Ca ²⁺), pH 7.4, 150mM NaCl, 0.02% sodium azide and 50% glycerol.
Purification Method	The antibody was affinity-purified from rabbit antiserum by affinity-chromatography using epitope-specific immunogen.
Clonality	Polyclonal
Alias	Cerebellin-4 [Precursor]; Cerebellin-like glycoprotein 1; CBLN4; CBLNL1; UNQ718/PRO1382
Product Type	Polyclonal Antibody
Immunogen Species	Homo sapiens (Human)
Target Names	CBLN4

Image



Western blot analysis of extracts from COS cells, using CBLN4 antibody.



Immunohistochemistry analysis of paraffin-embedded human thymus gland tissue using CBLN4 antibody.