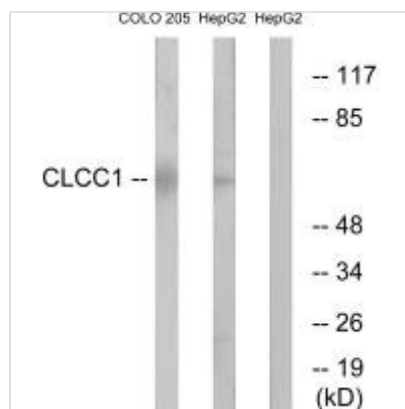




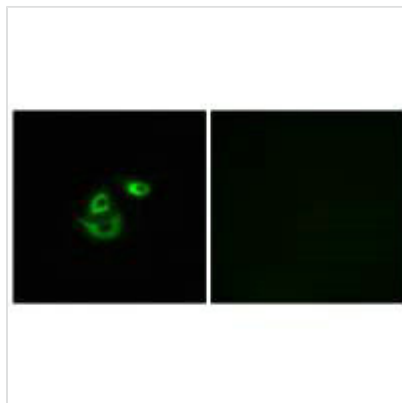
CLCC1 Antibody

Product Code	CSB-PA094721
Storage	Upon receipt, store at -20°C or -80°C. Avoid repeated freeze.
Uniprot No.	Q96S66
Immunogen	Synthesized peptide derived from internal of Human CLCC1.
Raised In	Rabbit
Species Reactivity	Human
Specificity	The antibody detects endogenous levels of total CLCC1 protein.
Tested Applications	ELISA, WB, IHC, IF; WB:1:500-1:3000, IHC:1:50-1:200, IF:1:100-1:200
Form	Rabbit IgG in phosphate buffered saline (without Mg ²⁺ and Ca ²⁺), pH 7.4, 150mM NaCl, 0.02% sodium azide and 50% glycerol.
Purification Method	The antibody was affinity-purified from rabbit antiserum by affinity-chromatography using epitope-specific immunogen.
Clonality	Polyclonal
Alias	KIAA0761; MCLC; mid-1-related chloride channel 1;
Product Type	Polyclonal Antibody
Immunogen Species	Homo sapiens (Human)
Target Names	CLCC1

Image



Western blot analysis of extracts from COLO cells and HepG2 cells, using CLCC1 antibody.



Immunofluorescence analysis of A549 cells,
using CLCC1 antibody.