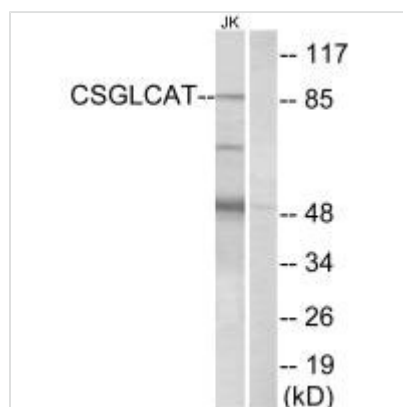




CHPF2 Antibody

Product Code	CSB-PA164193
Storage	Upon receipt, store at -20°C or -80°C. Avoid repeated freeze.
Uniprot No.	Q9P2E5
Immunogen	Synthesized peptide derived from internal of Human CSGLCAT.
Raised In	Rabbit
Species Reactivity	Human
Specificity	The antibody detects endogenous levels of total CSGLCAT protein.
Tested Applications	ELISA, WB; WB: 1:500-1:3000
Form	Rabbit IgG in phosphate buffered saline (without Mg ²⁺ and Ca ²⁺), pH 7.4, 150mM NaCl, 0.02% sodium azide and 50% glycerol.
Purification Method	The antibody was affinity-purified from rabbit antiserum by affinity-chromatography using epitope-specific immunogen.
Clonality	Polyclonal
Alias	Chondroitin sulfate glucuronyltransferase; EC 2.4.1.226; N-acetylgalactosaminyl-proteoglycan 3-beta-glucuronosyltransferase; Chondroitin glucuronyltransferase II; CSGlcA-T
Product Type	Polyclonal Antibody
Immunogen Species	Homo sapiens (Human)
Target Names	CHPF2

Image



Western blot analysis of extracts from Jurkat cells, using CSGLCAT antibody.

Usage For Research Use Only. Not for use in diagnostic or therapeutic procedures.