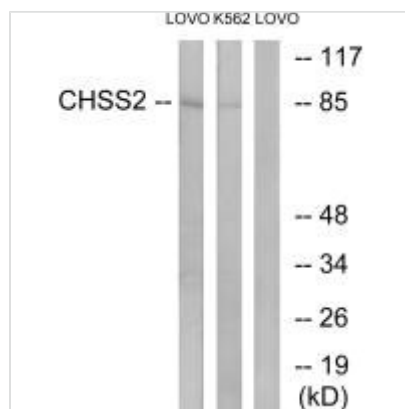




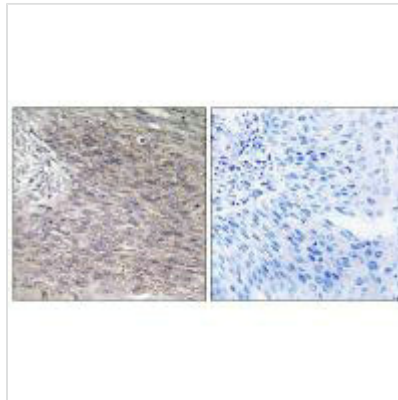
CHPF Antibody

Product Code	CSB-PA445330
Storage	Upon receipt, store at -20°C or -80°C. Avoid repeated freeze.
Uniprot No.	Q8IZ52
Immunogen	Synthesized peptide derived from internal of Human CHSS2.
Raised In	Rabbit
Species Reactivity	Human,Mouse,Rat
Specificity	The antibody detects endogenous levels of total CHSS2 protein.
Tested Applications	ELISA,WB,IHC,IF;WB:1:500-1:3000,IHC:1:50-1:100,IF:1:100-1:500
Form	Rabbit IgG in phosphate buffered saline (without Mg ²⁺ and Ca ²⁺), pH 7.4, 150mM NaCl, 0.02% sodium azide and 50% glycerol.
Purification Method	The antibody was affinity-purified from rabbit antiserum by affinity-chromatography using epitope-specific immunogen.
Clonality	Polyclonal
Alias	CHSS2; DKFZP434E0423; EC 2.4.1.175; EC 2.4.1.226;
Product Type	Polyclonal Antibody
Immunogen Species	Homo sapiens (Human)
Target Names	CHPF

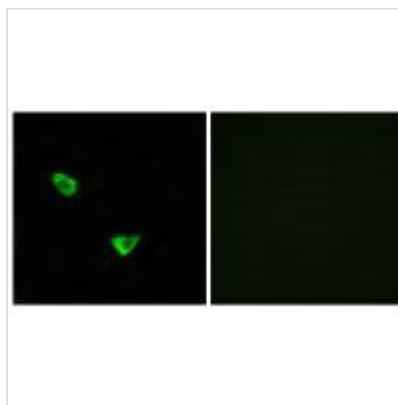
Image



Western blot analysis of extracts from LOVO cells and K562 cells, using CHSS2 antibody.



Immunohistochemistry analysis of paraffin-embedded human cervix carcinoma tissue using CHSS2 antibody.



Immunofluorescence analysis of MCF-7 cells, using CHSS2 antibody.