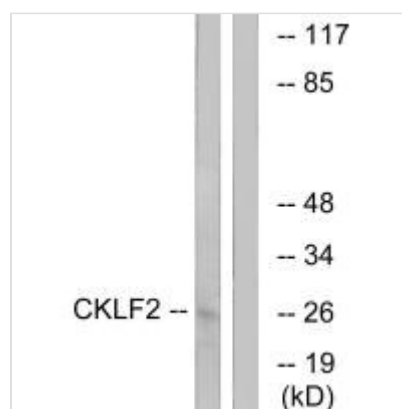




CMTM2 Antibody

Product Code	CSB-PA125897
Storage	Upon receipt, store at -20°C or -80°C. Avoid repeated freeze.
Uniprot No.	Q8TAZ6
Immunogen	Synthesized peptide derived from internal of Human CKLF2.
Raised In	Rabbit
Species Reactivity	Human
Specificity	The antibody detects endogenous levels of total CKLF2 protein.
Tested Applications	ELISA,WB;WB:1:500-1:3000
Form	Rabbit IgG in phosphate buffered saline (without Mg ²⁺ and Ca ²⁺), pH 7.4, 150mM NaCl, 0.02% sodium azide and 50% glycerol.
Purification Method	The antibody was affinity-purified from rabbit antiserum by affinity-chromatography using epitope-specific immunogen.
Clonality	Polyclonal
Alias	chemokine-like factor 2; CKLF-like MARVEL transmembrane domain containing 2; CKLF2; CKLFSF2;
Product Type	Polyclonal Antibody
Immunogen Species	Homo sapiens (Human)
Target Names	CMTM2

Image



Western blot analysis of extracts from K562 cells, using CKLF2 antibody.

Usage For Research Use Only. Not for use in diagnostic or therapeutic procedures.