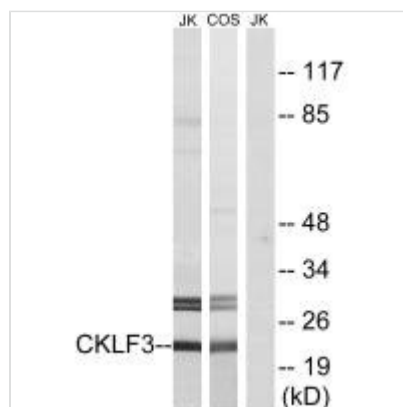




CMTM3 Antibody

Product Code	CSB-PA574353
Storage	Upon receipt, store at -20°C or -80°C. Avoid repeated freeze.
Uniprot No.	Q96MX0
Immunogen	Synthesized peptide derived from N-terminal of Human CKLF3.
Raised In	Rabbit
Species Reactivity	Human
Specificity	The antibody detects endogenous levels of total CKLF3 protein.
Tested Applications	ELISA, WB; WB: 1:500-1:3000
Form	Rabbit IgG in phosphate buffered saline (without Mg ²⁺ and Ca ²⁺), pH 7.4, 150mM NaCl, 0.02% sodium azide and 50% glycerol.
Purification Method	The antibody was affinity-purified from rabbit antiserum by affinity-chromatography using epitope-specific immunogen.
Clonality	Polyclonal
Alias	CKLF-like MARVEL transmembrane domain-containing protein 3; Chemokine-like factor superfamily member 3; CMTM3; CKLFSF3;
Product Type	Polyclonal Antibody
Immunogen Species	Homo sapiens (Human)
Target Names	CMTM3

Image



Western blot analysis of extracts from Jurkat cells and COS cells, using CKLF3 antibody.

Usage

For Research Use Only. Not for use in diagnostic or therapeutic procedures.